

R. 31 W.

R. 30 W.

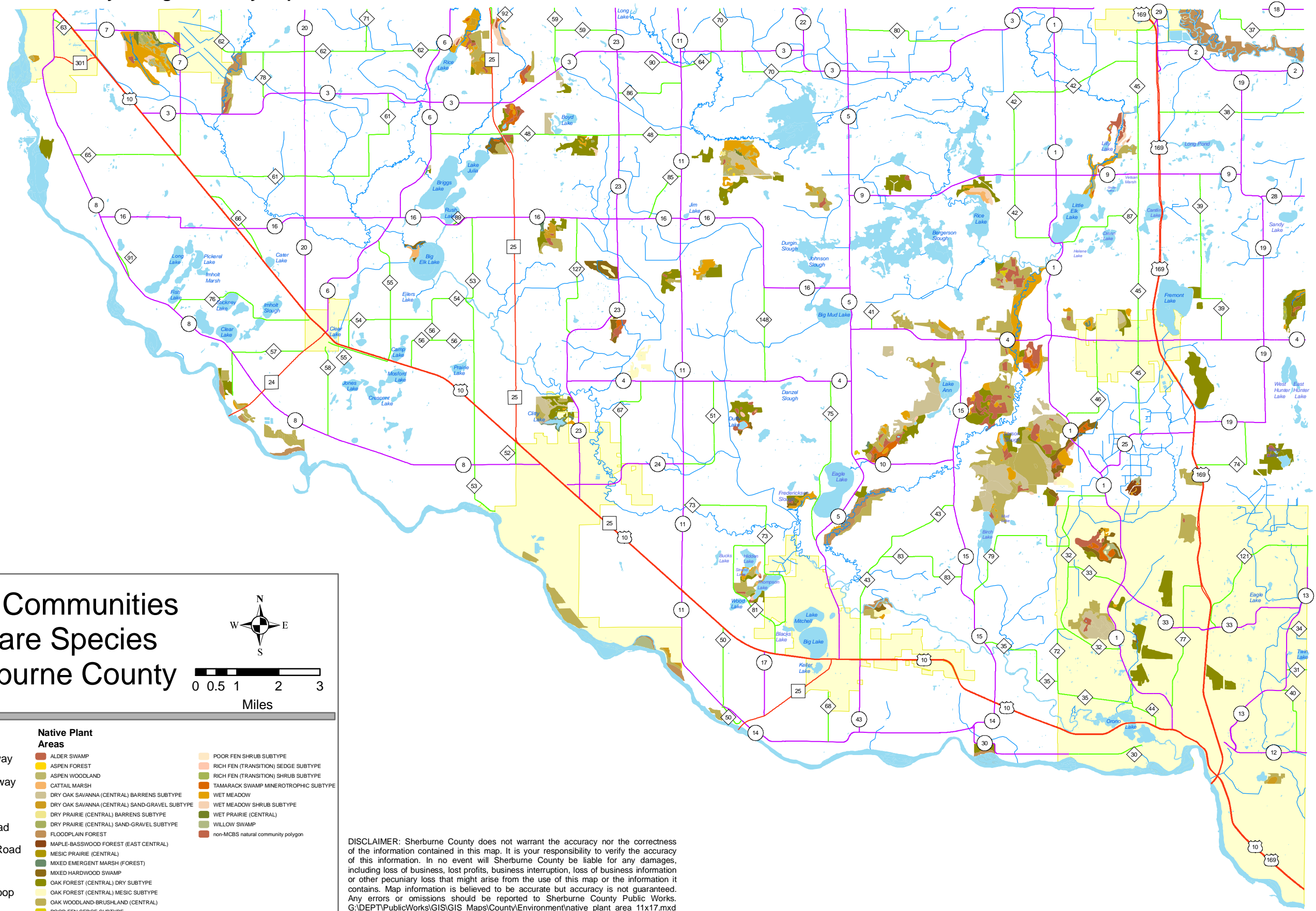
R. 29 W.

R. 28 W.

R. 27 W.

R. 26 W.

Figure 3 - Minnesota County Biological Survey Map



Natural Communities and Rare Species of Sherburne County



Transportation

- U.S. Highway
- State Highway
- CSAH
- County Road
- Township Road
- City Street
- Ramp or Loop
- Airport

Native Plant Areas

- ALDER SWAMP
- ASPEN FOREST
- ASPEN WOODLAND
- CATTAIL MARSH
- DRY OAK SAVANNA (CENTRAL) BARRENS SUBTYPE
- DRY OAK SAVANNA (CENTRAL) SAND-GRAVEL SUBTYPE
- DRY PRAIRIE (CENTRAL) BARRENS SUBTYPE
- DRY PRAIRIE (CENTRAL) SAND-GRAVEL SUBTYPE
- FLOODPLAIN FOREST
- MAPLE-BASSWOOD FOREST (EAST CENTRAL)
- MESIC PRAIRIE (CENTRAL)
- MIXED EMERGENT MARSH (FOREST)
- MIXED HARDWOOD SWAMP
- OAK FOREST (CENTRAL) DRY SUBTYPE
- OAK FOREST (CENTRAL) MESIC SUBTYPE
- OAK WOODLAND-BRUSHLAND (CENTRAL)
- POOR FEN SEDGE SUBTYPE
- POOR FEN SHRUB SUBTYPE
- RICH FEN (TRANSITION) SEDGE SUBTYPE
- RICH FEN (TRANSITION) SHRUB SUBTYPE
- TAMARACK SWAMP MINEROTROPHIC SUBTYPE
- WET MEADOW
- WET MEADOW SHRUB SUBTYPE
- WET PRAIRIE (CENTRAL)
- WILLOW SWAMP
- non-MCBS natural community polygon

DISCLAIMER: Sherburne County does not warrant the accuracy nor the correctness of the information contained in this map. It is your responsibility to verify the accuracy of this information. In no event will Sherburne County be liable for any damages, including loss of business, lost profits, business interruption, loss of business information or other pecuniary loss that might arise from the use of this map or the information it contains. Map information is believed to be accurate but accuracy is not guaranteed. Any errors or omissions should be reported to Sherburne County Public Works. G:\DEPT\PublicWorks\GIS\GIS_Maps\County\Environment\native_plant_area_11x17.mxd
Map was Updated/Created: February 22, 2005

T. 35 N.
T. 34 N.
T. 33 N.
T. 32 N.