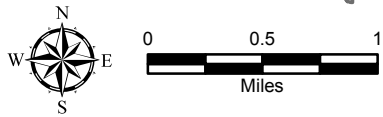
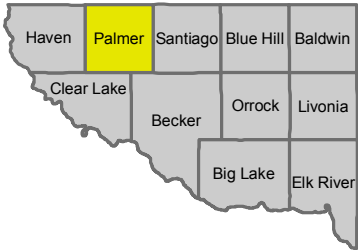


Palmer Township

T 35 N. - R 29 W.



Roads

- US Highway
- State Highway
- County State Aid Highway (CSAH)
- Municipal State Aid Street (MSAS)
- County Road
- Township Road
- City Street
- Forest Road
- Refuge Road
- Private Road
- Section Lines

DISCLAIMER: Sherburne County does not warrant the accuracy nor the correctness of the information contained in this map. It is your responsibility to verify the accuracy of this information. In no event will Sherburne County be liable for any damages, including loss of business, lost profits, business interruption, loss of business information or other pecuniary loss that might arise from the use of this map or the information it contains. Map information is believed to be accurate but accuracy is not guaranteed. Any errors or omissions should be reported to Sherburne County Public Works, Path: H:\GIS\GIS_Maps\InternetMaps\Palmer\Palmer.mxd Map Created: 6/27/2012 Map Updated: 7/7/2017

