

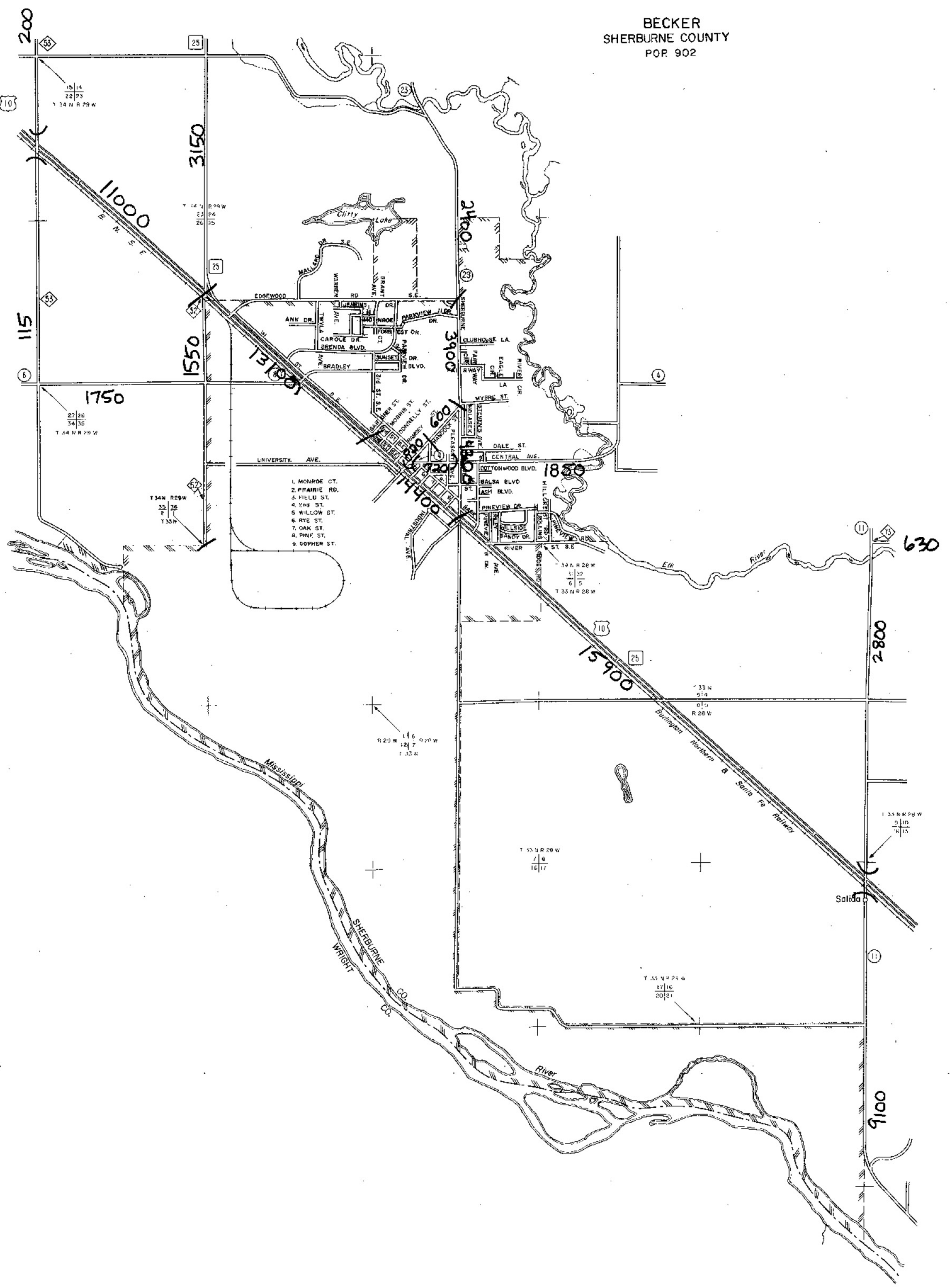
FINAL
NOVEMBER 2000

1999 TRAFFIC VOLUMES
MUNICIPALITIES OF
SHERBURNE CO.

PREPARED BY THE
MINNESOTA DEPARTMENT OF TRANSPORTATION
BUREAU OF POLICY AND PLANNING
IN COOPERATION WITH THE
U.S. DEPARTMENT OF TRANSPORTATION
FEDERAL HIGHWAY ADMINISTRATION



- LEGEND**
- INTERSTATE TRUNK HIGHWAY
 - U.S. NUMBERED TRUNK HIGHWAY
 - STATE NUMBERED TRUNK HIGHWAY
 - COUNTY STATE AND HIGHWAY
 - COUNTY ROAD
 - COUNTY STATE AND HIGHWAY N
 - ADJOINING COUNTY
 - COUNTY ROAD N, ADJOINING COUNTY
 - CORPORATE LIMIT
 - CENTRAL BUSINESS DISTRICT BOUNDARY



BECKER
SHERBURNE COUNTY
POP 902

A.A.D.T. 2500
(ANNUAL AVERAGE DAILY TRAFFIC)
NUMBERS INDICATE ANNUAL AVERAGE
TRAFFIC VOLUMES ON DESIGNATED ROADWAYS

VOLUMES PREPARED BY
TRANSPORTATION RESEARCH AND
IMPROVEMENT MANAGEMENT DIVISION

MUNICIPALITIES SHOWN
ON THIS SHEET

BECKER

1999 TRAFFIC MAP

Municipalities under 5,000 pop. in SHERBURNE COUNTY
SHEET 2 OF 3