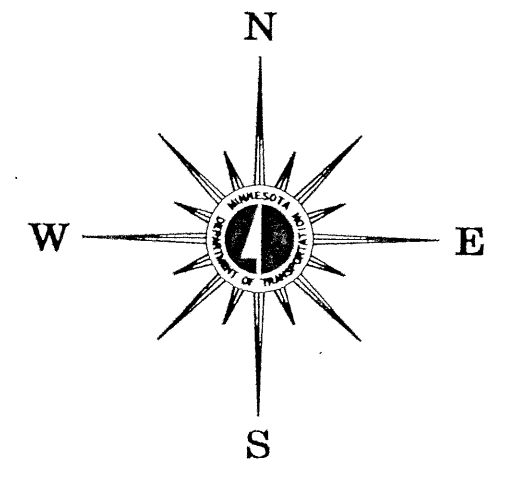
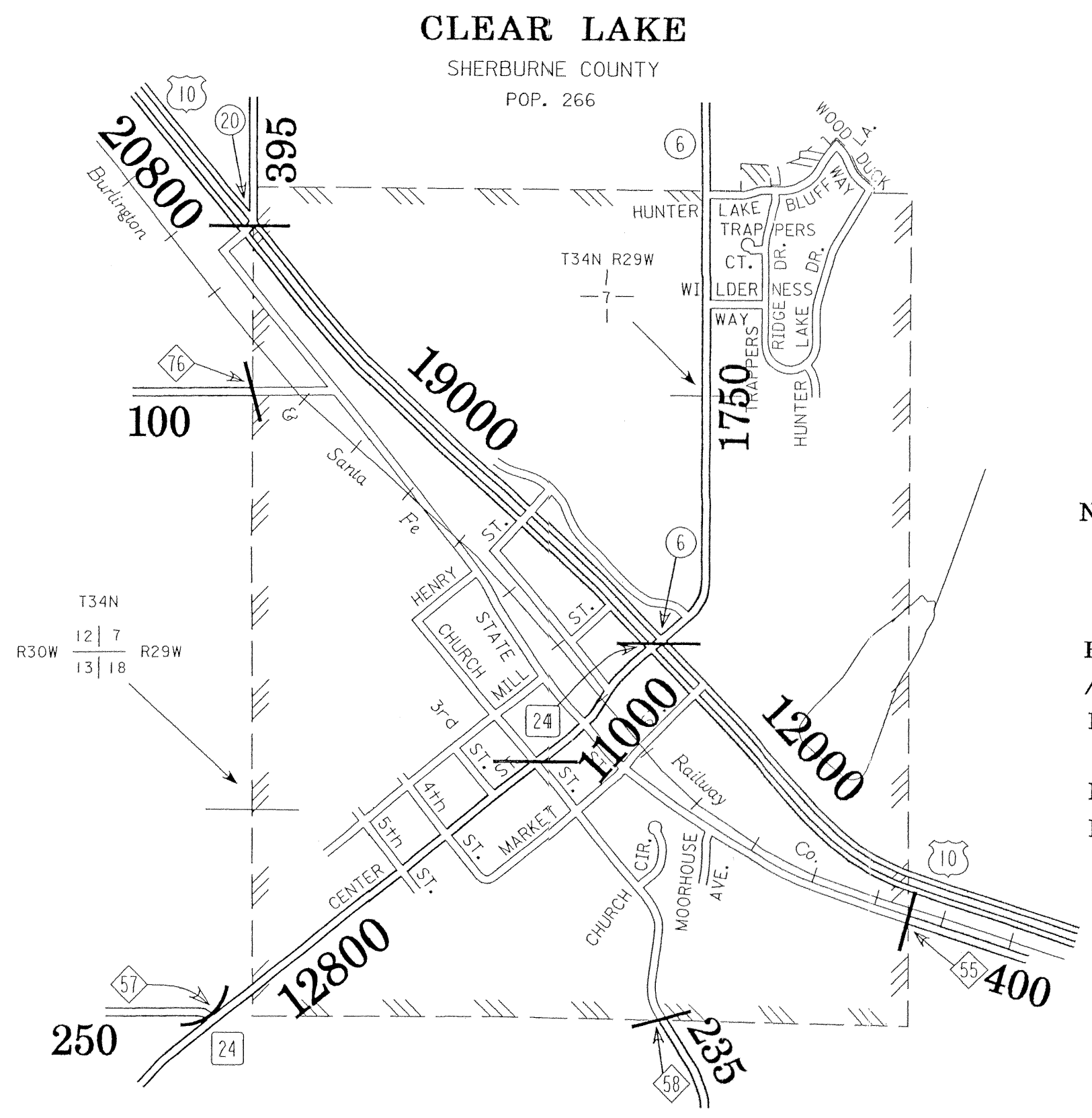
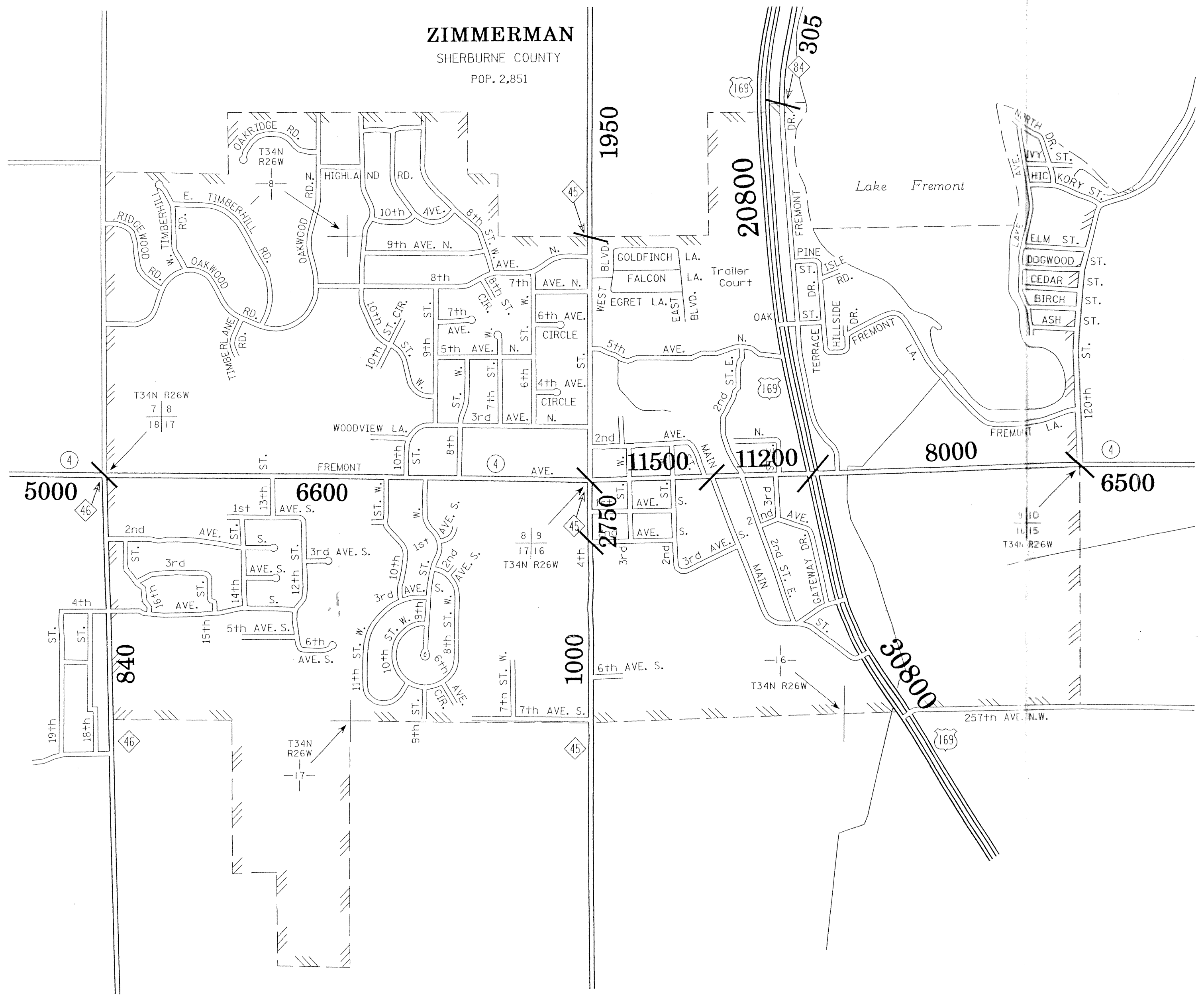


2003
 BASIC DATA - 1977



- LEGEND**
- INTERSTATE TRUNK HIGHWAY..... (I)
 - U.S. TRUNK HIGHWAY..... (U)
 - STATE TRUNK HIGHWAY..... (S)
 - COUNTY STATE AID HIGHWAY..... (C)
 - COUNTY ROAD..... (R)
 - PUBLIC ROAD..... (P)
 - PRIVATE ROAD..... (PR)
 - CORPORATE LIMITS..... (CL)



VOLUMES PREPARED BY
 THE OFFICE OF
 TRANSPORTATION DATA & ANALYSIS

NUMERALS INDICATE AVERAGE DAILY
 TRAFFIC VOLUMES ON DESIGNATED ROADS
 NOTE: T.H. ROUTES ARE 2002 A.A.D.T. VOLUMES

FOR DESIGNATED ROADS :
 / = SEGMENT ENDPOINT FOR ALL
 ROADS INTERSECTED BY HATCH
 (= SEGMENT ENDPOINT ONLY FOR
 ROAD SEPARATED FROM INTERSECTING
 ROAD BY ARC

FEB - 4 2004

MUNICIPALITIES SHOWN
 ON THIS SHEET
 CLEAR LAKE
 ZIMMERMAN