



PRIMARY CONTACT:
Marc Schneider, Senior Planner Sherburne County
763-765-4454, regionalplanningpartnership@gmail.com

APRIL 7, 2020 -- FOR IMMEDIATE RELEASE

Sherburne and Wright County Leaders launch Framework 2030 *Collaborative planning and economic development project first of its kind for the region*

APRIL 7, 2020, SHERBURNE & WRIGHT COUNTIES, MINNESOTA -- The [Central Mississippi River Regional Planning Partnership](#) is launching Framework 2030, the region's first collaborative planning and economic development project. The Partner communities anticipate significant growth and development in the coming decades, and are using a collaborative approach to regional planning to maintain a high quality of life for area residents, businesses, and visitors.

From its initial formation in 2016, the Partnership now consists of the cities of Becker, Big Lake, and Monticello; Becker, Silver Creek, Monticello and Big Lake townships; and Sherburne and Wright counties. Framework 2030 includes guidance on how each community can refine their local approaches, policies, plans, projects, and regulations over time to harmonize them with the regional direction. To focus this effort, the Partnership identified a regional planning area inclusive of all of Sherburne and Wright Counties and a focused planning area tied to Partner communities to guide discussion on future growth.

"We sit within a dynamic region, and as change occurs we want to be sure we absorb the very best of this growth, while maintaining our community's character and appeal. To do this, however, we need to find ways to work in closer collaboration. Framework 2030 is an incredible opportunity for our communities to begin defining the quality of life in the future in a partnered approach."

-Darek Vetsch, Wright County Commissioner, District 2
Chair, Central Mississippi River Regional Planning Partnership

Framework 2030 is led by the Partnership and coordinated by the planners responsible for the Partner communities. The Partners are committed to an open and inclusive process and will engage stakeholders at key points in the project. Whether you live, work, or play in the region, you have a stake in and opinions about the future and how to maintain and improve the region's high quality of life. Framework 2030 offers multiple opportunities to share perspectives on the region's special qualities to protect and the challenges to overcome.



PRIMARY CONTACT:
Marc Schneider, Senior Planner Sherburne County
763-765-4454, regionalplanningpartnership@gmail.com

“Framework 2030 is a unique opportunity for our region to partner and define a vision that benefits each of our communities. We want to be sure that everyone has a chance to guide the future of our region. All are invited to this conversation and we hope community members take pride in their unique ability to guide our collective prosperity.”

-Tim Dolan, Sherburne County Commissioner, District 3
Partner, Central Mississippi River Regional Planning Partnership

Through Framework 2030, the Partnership will reach consensus on major opportunities and choices that benefit the region, position Partners to be leaders and shape their own futures individually and collectively, and support connectivity within and beyond the region. The process will include numerous opportunities to engage the public and is expected to conclude in early 2021.

To learn more about the [Partnership](#), [Framework 2030](#), and how to get involved, visit the project’s webpage.

###

PRIMARY CONTACTS:

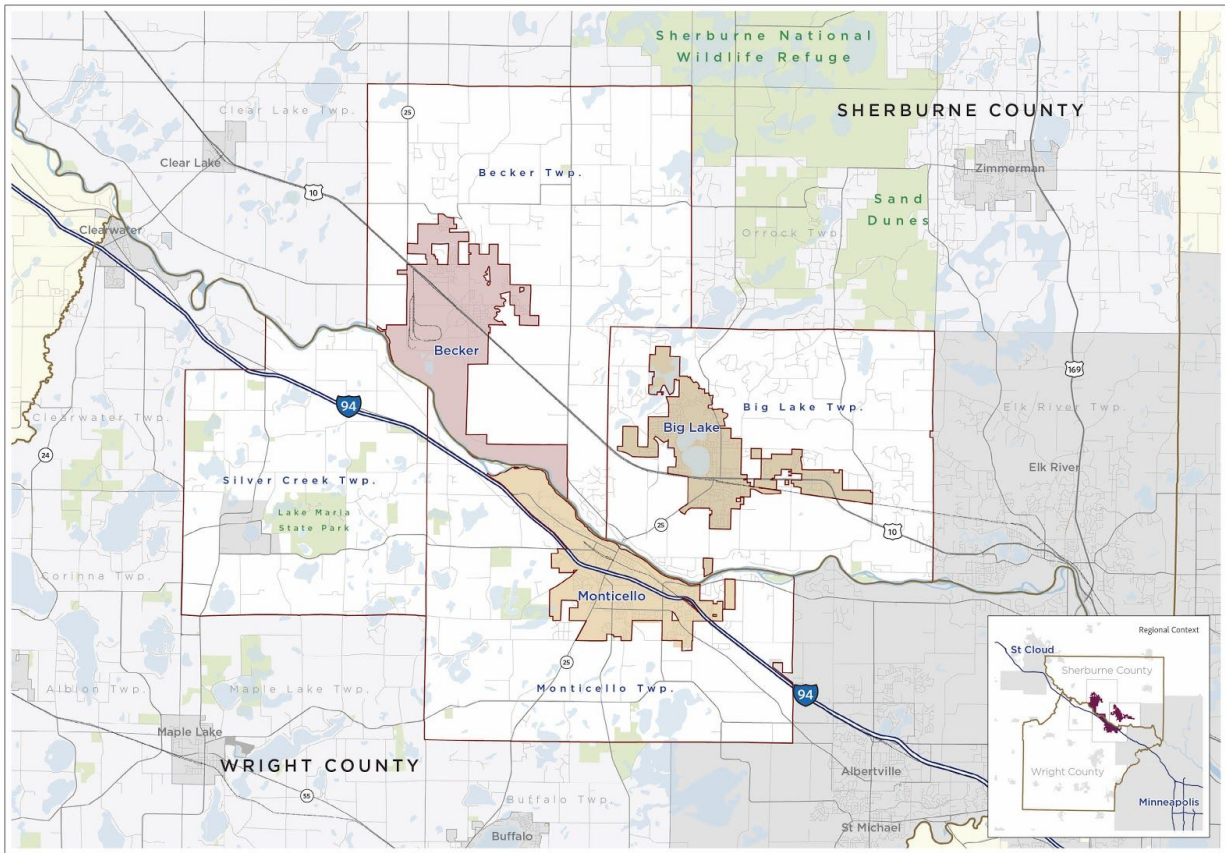
Marc Schneider, Senior Planner Sherburne County,
Office: 763-765-4454
regionalplanningpartnership@gmail.com

Jamie Greene, planning-NEXT, Project Consultant, 614-586-1500



Project logo for Framework 2030.

Map of the Planning Area



Planning Area
 DRAFT January 2020



Central Mississippi River ~ Regional Planning Partnership
 Committed to creating a shared regional vision and goals, then working together to accomplish them.
www.regionalplanningpartnership.org | regionalplanningpartnership@gmail.com

- Interstate
- US Highway
- State Highway
- City of Becker
- City of Monticello
- City of Big Lake
- Participating Townships
- Surrounding Counties
- Other Cities
- Park Land
- Mississippi River
- Open Water

***NOTE: More images and maps available upon request. Please contact Kyle May, kyle@planning-next.com, project consultant for more information or additional assets.**